

# WHISPERING HEIGHTS

AT SADDLERIDGE

7540 N RED LEDGE DRIVE, LOT 205  
PARADISE VALLEY, AZ 85253

## LOT 205

~5-ACRE LOT

~2,065 FT HOME SITE ELEVATION (MAIN LEVEL)

~14,500 EXTERIOR SQ FT

~300 FT PRIVATE DRIVE

UNOBSTRUCTED ~270° VIEWS OF THE VALLEY,  
INCLUDING MUMMY & CAMELBACK MOUNTAINS

## BUILDABLE PLAN

~11,500 INTERIOR SQ FT

5 BEDROOMS

6 FULL BATHROOMS | 3 POWDER BATHS

5-CAR GARAGE | HVAC, EV CHARGING, GLASS DOORS

## ADDITIONAL FEATURES:

Cantilevered deck with a negative-edge pool featuring a glass floor; a retractable glass wall on the Main Level that opens up the living, kitchen with butler's pantry, and dining areas to the balcony; an expansive indoor/outdoor bar situated between the living and kitchen areas; home theater; lobby with circular glass elevator, architectural staircase, and a tranquil waterfall feature; gym and game room with panoramic views; a ~3,000-bottle wine room overlooking the scenery; dual offices; spacious upper-level terrace; two primary suites, with the main level suite featuring a suspended fireplace; multiple laundry rooms; state-of-the-art home automation and sound system; and a 16-zone HVAC system.

ARCHITECT: IVAN SHONGOV OF ARCHITEKSHON, INC.

BUILDER: KURT HOLLAND OF INCLINE LLC

Exclusively represented by The Santistevan Group,  
DRE #581367000, #627471000. © The Santistevan Group.

[saddleridgeliving.com](http://saddleridgeliving.com)

(480) 703-4085

[info@saddleridgeliving.com](mailto:info@saddleridgeliving.com)

## MAIN LEVEL



This is not an offering of sale. Saddleridge is a development by Red Ledge Developers LLC. The developer reserves the right to make changes and modifications to plans, floor plans, physical configurations, materials, designs, pricing, purchase terms, specifications, features and scheduling of delivery without notice or obligation. Floor plans are representational only.



SADDLERIDGE  
PARADISE VALLEY, ARIZONA

# WHISPERING HEIGHTS

AT SADDLERIDGE

7540 N RED LEDGE DRIVE, LOT 205  
PARADISE VALLEY, AZ 85253

## LOT 205

~5-ACRE LOT

~2,065 FT HOME SITE ELEVATION (MAIN LEVEL)

~14,500 EXTERIOR SQ FT

~300 FT PRIVATE DRIVE

UNOBSTRUCTED ~270° VIEWS OF THE VALLEY,  
INCLUDING MUMMY & CAMELBACK MOUNTAINS

## BUILDABLE PLAN

~11,500 INTERIOR SQ FT

5 BEDROOMS

6 FULL BATHROOMS | 3 POWDER BATHS

5-CAR GARAGE | HVAC, EV CHARGING, GLASS DOORS

## ADDITIONAL FEATURES:

Cantilevered deck with a negative-edge pool featuring a glass floor; a retractable glass wall on the Main Level that opens up the living, kitchen with butler's pantry, and dining areas to the balcony; an expansive indoor/outdoor bar situated between the living and kitchen areas; home theater; lobby with circular glass elevator, architectural staircase, and a tranquil waterfall feature; gym and game room with panoramic views; a ~3,000-bottle wine room overlooking the scenery; dual offices; spacious upper-level terrace; two primary suites, with the main level suite featuring a suspended fireplace; multiple laundry rooms; state-of-the-art home automation and sound system; and a 16-zone HVAC system.

ARCHITECT: IVAN SHONGOV OF ARCHITEKSHON, INC.

BUILDER: KURT HOLLAND OF INCLINE LLC

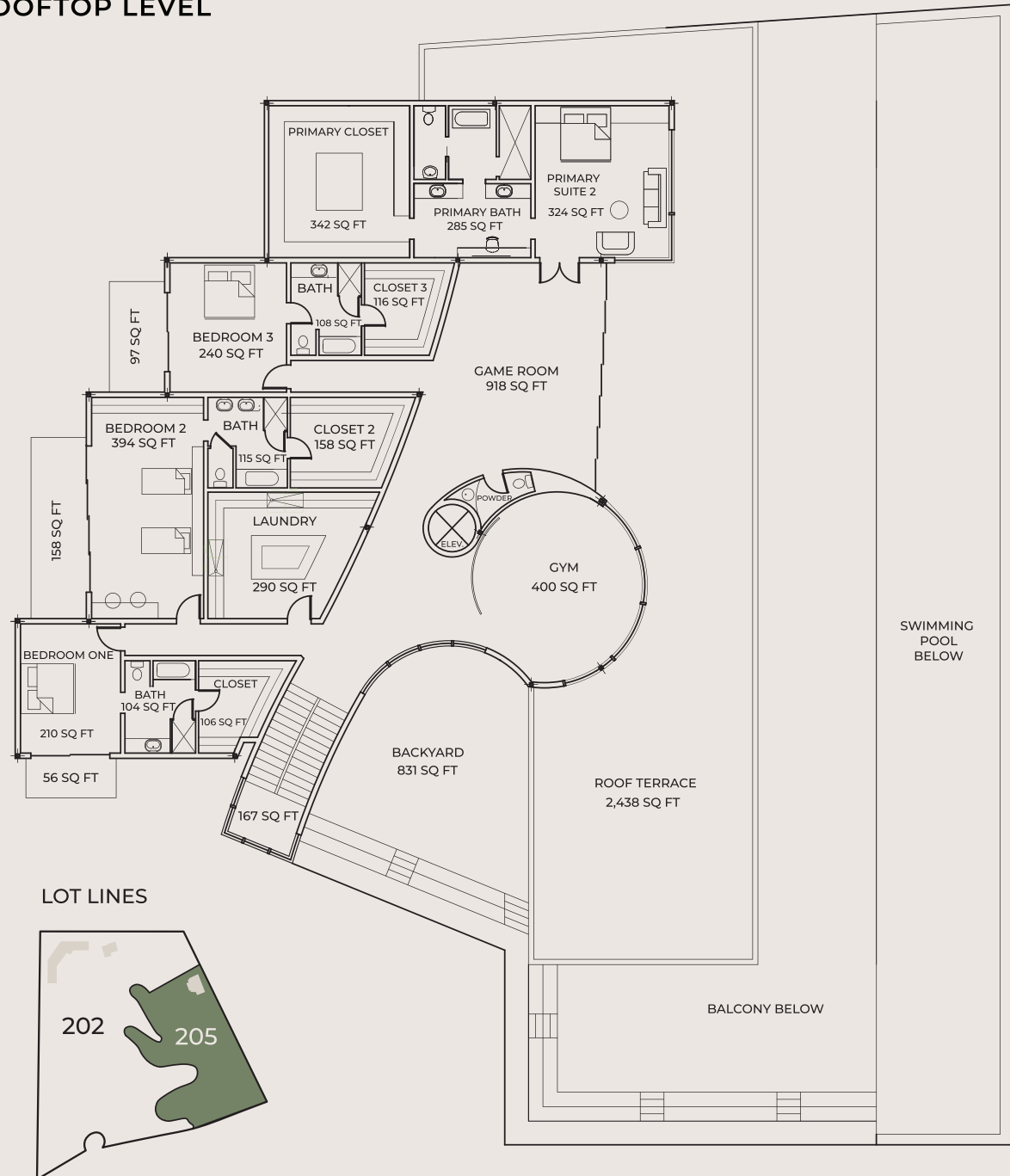
Exclusively represented by The Santistevan Group,  
DRE #581367000, #627471000. © The Santistevan Group.

[saddleridgeliving.com](http://saddleridgeliving.com)

(480) 703-4085

[info@saddleridgeliving.com](mailto:info@saddleridgeliving.com)

## ROOFTOP LEVEL



This is not an offering of sale. Saddleridge is a development by Red Ledge Developers LLC. The developer reserves the right to make changes and modifications to plans, floor plans, physical configurations, materials, designs, pricing, purchase terms, specifications, features and scheduling of delivery without notice or obligation. Floor plans are representational only.



SADDLERIDGE  
PARADISE VALLEY, ARIZONA

# WHISPERING HEIGHTS

AT SADDLERIDGE

7540 N RED LEDGE DRIVE, LOT 205  
PARADISE VALLEY, AZ 85253

## LOT 205

~5-ACRE LOT

~2,065 FT HOME SITE ELEVATION (MAIN LEVEL)

~14,500 EXTERIOR SQ FT

~300 FT PRIVATE DRIVE

UNOBSTRUCTED ~270° VIEWS OF THE VALLEY,  
INCLUDING MUMMY & CAMELBACK MOUNTAINS

## BUILDABLE PLAN

~11,500 INTERIOR SQ FT

5 BEDROOMS

6 FULL BATHROOMS | 3 POWDER BATHS

5-CAR GARAGE | HVAC, EV CHARGING, GLASS DOORS

## ADDITIONAL FEATURES:

Cantilevered deck with a negative-edge pool featuring a glass floor; a retractable glass wall on the Main Level that opens up the living, kitchen with butler's pantry, and dining areas to the balcony; an expansive indoor/outdoor bar situated between the living and kitchen areas; home theater; lobby with circular glass elevator, architectural staircase, and a tranquil waterfall feature; gym and game room with panoramic views; a ~3,000-bottle wine room overlooking the scenery; dual offices; spacious upper-level terrace; two primary suites, with the main level suite featuring a suspended fireplace; multiple laundry rooms; state-of-the-art home automation and sound system; and a 16-zone HVAC system.

ARCHITECT: IVAN SHONGOV OF ARCHITEKSHON, INC.

BUILDER: KURT HOLLAND OF INCLINE LLC

Exclusively represented by The Santistevan Group,  
DRE #581367000, #627471000. © The Santistevan Group.

[saddleridgeliving.com](http://saddleridgeliving.com)

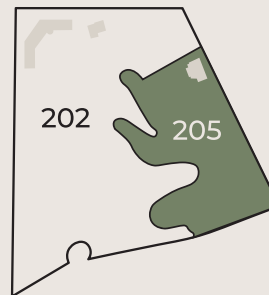
(480) 703-4085

[info@saddleridgeliving.com](mailto:info@saddleridgeliving.com)

## LOWER LEVEL



LOT LINES



This is not an offering of sale. Saddleridge is a development by Red Ledge Developers LLC. The developer reserves the right to make changes and modifications to plans, floor plans, physical configurations, materials, designs, pricing, purchase terms, specifications, features and scheduling of delivery without notice or obligation. Floor plans are representational only.



SADDLERIDGE  
PARADISE VALLEY, ARIZONA